

Configuring Netscape Messenger to Use Mails.

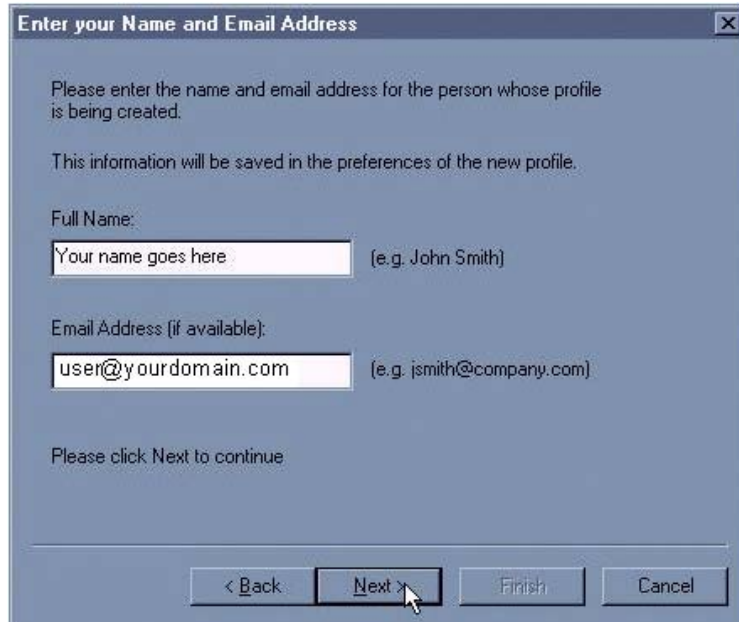
- The following instructions cover typical usage of Netscape Messenger and assume the software has been installed correctly on your system.
- The instructions are only for individuals with a direct Internet connection, by modem or network.
- If you are behind a firewall or proxy server, the information below may not work. Consult your network administrator for more information.
- REMEMBER, if you are already using Netscape to open your email, you do not need to change anything to use SMTP Authentication.

Setting Up Netscape Messenger - First Time Use.

Open Netscape Messenger. If this is the first time opening Netscape there will be a Profile wizard. You may also activate it by selecting "user profile manager" in the start menu under Netscape communicator utilities. Once the wizard starts, you'll see this screen. Choose "Next".



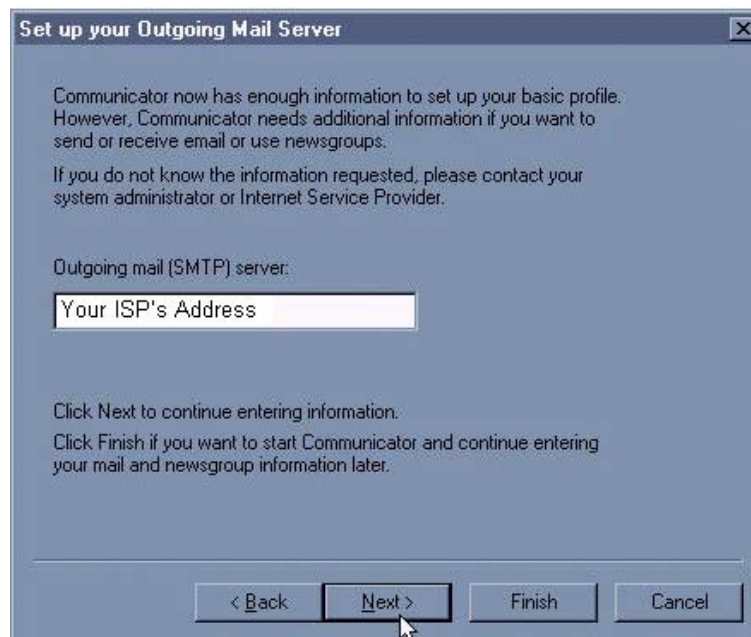
- This screen will appear.



The screenshot shows a dialog box titled "Enter your Name and Email Address". It contains the following text: "Please enter the name and email address for the person whose profile is being created." and "This information will be saved in the preferences of the new profile." Below this, there are two input fields. The first is labeled "Full Name:" and contains the placeholder text "Your name goes here" with an example "(e.g. John Smith)". The second is labeled "Email Address (if available):" and contains the placeholder text "user@yourdomain.com" with an example "(e.g. jsmith@company.com)". At the bottom, it says "Please click Next to continue" and has four buttons: "< Back", "Next >", "Finish", and "Cancel". A mouse cursor is pointing at the "Next >" button.

- Put your name and email address in the boxes, and click "Next".

Next screen will be: for Set up your Outgoing Mail Server.

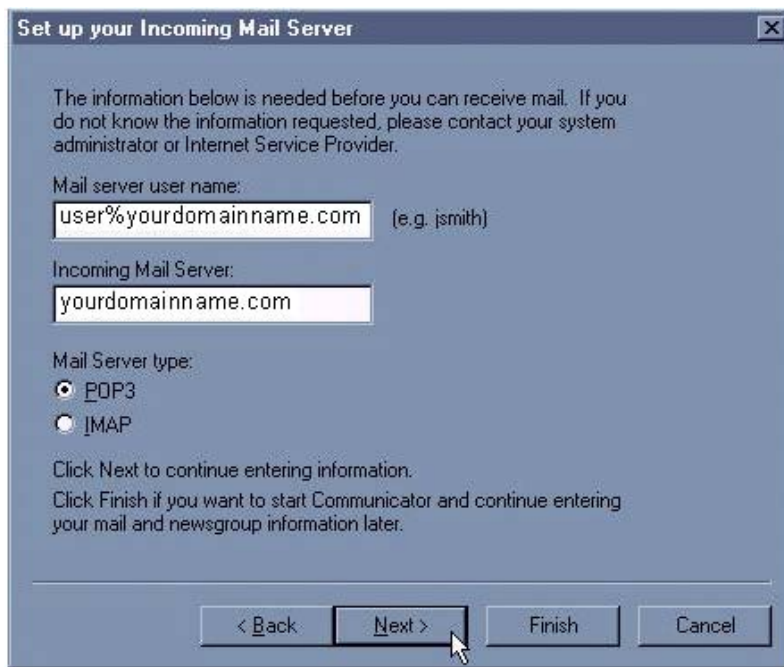


The screenshot shows a dialog box titled "Set up your Outgoing Mail Server". It contains the following text: "Communicator now has enough information to set up your basic profile. However, Communicator needs additional information if you want to send or receive email or use newsgroups." and "If you do not know the information requested, please contact your system administrator or Internet Service Provider." Below this, there is an input field labeled "Outgoing mail (SMTP) server:" with the placeholder text "Your ISP's Address". At the bottom, it says "Click Next to continue entering information." and "Click Finish if you want to start Communicator and continue entering your mail and newsgroup information later." There are four buttons: "< Back", "Next >", "Finish", and "Cancel". A mouse cursor is pointing at the "Next >" button.

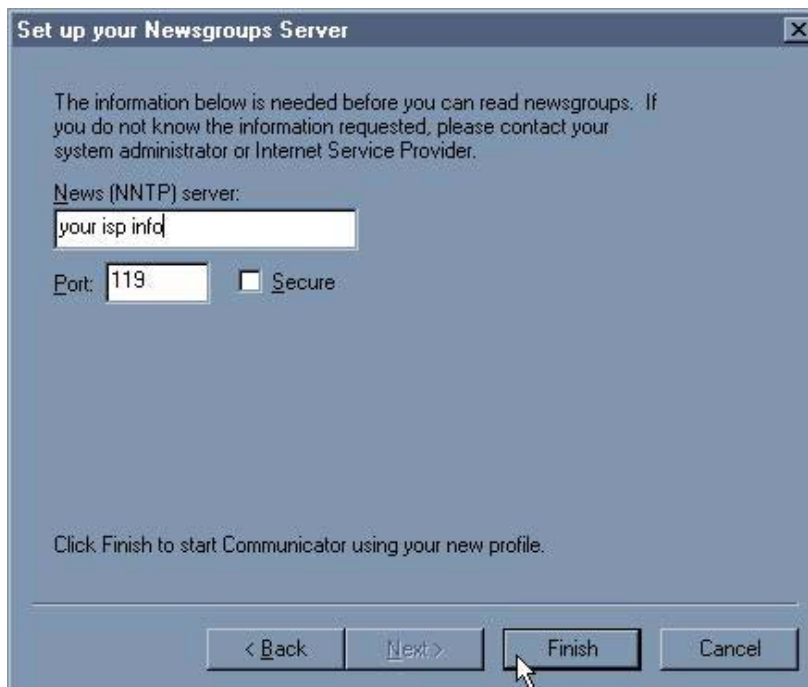
Put your ISP's Address in the box.

Choose "Next"

Next Screen will be **Setup your Incoming Mail Server.**



- Put in your username. Be sure to use the % sign, not the @ sign! Then enter your incoming mail server, in the format yourdomain.com or yourdomain.net, etc. Make sure you check the "POP3" box.
- Choose "Next"



This screen is for setting up your Newsgroup Server. TnSites.Com Hosting does not offer Newsgroups, so you'll have to use your ISP's information here.

- Click "**FINISH**".

You have now set up Netscape Communicator to open your email. Netscape does not need to have the SMTP authentication setup separately.

Setting Up Netscape Messenger - Reconfiguring for Web Werks Hosting:

- Open Messenger.
- Click **Edit** on the menu bar.
- Click **Preferences** in the Edit menu.
- Click **Identity** under the **Mail & Newsgroups** section of the Preferences window.
- Complete the following fields in the Preferences window:
 - **Your Name** - The name from which any e-mail sent using this profile will display.
 - **E-mail Address** - The e-mail address from which any e-mail sent using this profile will display. This has to be an email address on Web Werks servers.
 - Click **Mail Servers** under the **Mail & Newsgroups** section of the Preferences box.
 - Click **Edit** under Incoming Mail Servers.
 - Complete the following fields in the Mail Server Properties Box:
 - **Server Name** - The mail server from which e-mail is to be retrieved. . For example: yourdomainname.com.
 - **Server Type** - We use the POP3 protocol. Do not change the server type to anything besides POP3.
 - **User Name** - The user on your Mail server from which you wish to retrieve mail. in this format user%yourdomain.com
 - Click **OK** to return to the Preferences window.
 - Complete the following fields under **Outgoing Mail Server**.
 - **Outgoing Mail (SMTP) Server** - The mail server through which e-mail will be sent.
 - You may use your ISP's outgoing mail server.
 - **Outgoing Mail Server User Name** - Check with your ISP to determine your username.
 - Click **OK** to close the Preferences window.

Unfortunately, Netscape Messenger does not natively support retrieval of multiple e-mail accounts for POP3 mail servers.

To retrieve mail from multiple accounts, you will need to setup additional user profiles using the User Profile Manager supplied with Netscape. See your Netscape documentation for more information.

There are many more options available in Netscape Messenger. See the software's documentation for more information about advanced options.